

Our Vision

To eliminate domestic and sexual violence against women and children.

Our Mission Statement

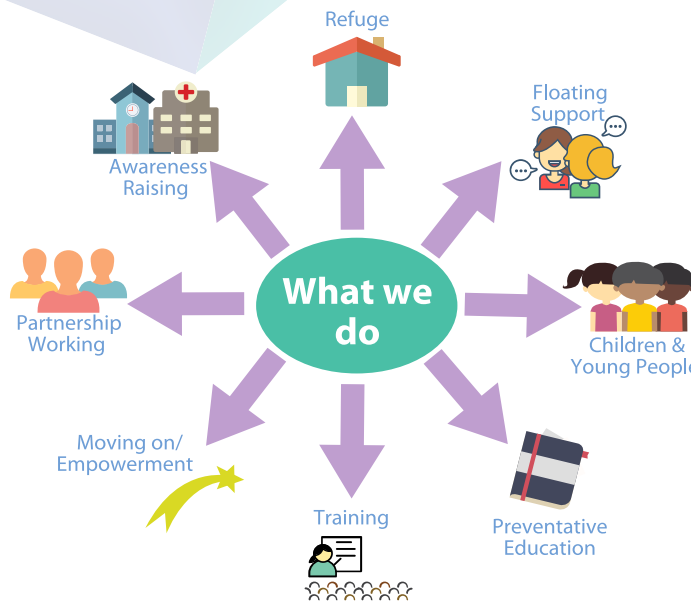
- To provide specialised support services for women and children who experience domestic and sexual violence.
- To work for and with women and children to ensure their voices are heard and their needs are met.
- To challenge attitudes and beliefs that perpetuate domestic and sexual violence as a form of violence against women.

Our Ethos

Self-help and mutual support for women, by women, with women.

Our Core Aims

- To provide temporary refuge for women and their children suffering mental, physical, financial or sexual abuse in the home.
- To offer support and advice to any woman who asks for it, whether or not she is living in a refuge and offer supportive aftercare to women leaving the refuge.
- To encourage the woman to take control of her own future, whether this involves returning home or beginning an independent life.
- To meet the needs of children and young people affected by domestic violence.
- To educate and inform the public, the media, the courts and statutory and voluntary agencies, always mindful of the fact that abused women are a direct result of the general position of women in our society.



In 2016/17 the PSNI responded to 29,166 incidents.

That's one every 18 minutes.

This represents the highest level recorded since PSNI data records started in 2004/5.

With thanks to our funders

Thank you to our partner agencies and to all the dedicated individuals, organisations and companies who supported our work against domestic violence so generously during the year.

- Belfast City Council Belfast District PCSP
- Belfast Health & Social Care Trust
- Big Lottery Fund
- Council for the Homeless NI (CHNI)
- Department of Education – Pathways Fund
- Department of Justice
- Lisburn & Castlereagh PCSP
- Lisburn Policing and Community Safety Partnership
- Newry Mourne & Down District Council – Community Safety Fund
- Northern Ireland Electricity Networks
- South Eastern Health & Social Care Trust
- Supporting People
- Compassion Belfast (Ulster Temple Church)
- Hillsborough COI Parish Church
- Tesco Extra Newtownbreda
- Elim Pentecostal Hillsborough
- BHSCT Human Resources Department
- Whitemountain Quarries Ltd
- Capita/Prudential
- Dorman & Sons
- Celtic Football Club
- CFC Newtownards & Strandtown
- Asda, Upper Newtownards Road
- Lisburn Zone Indoor bowls
- Cash for Kids
- Schools: Boy's Model School, Ballysillan; An Bunscoil, Ballymurphy; Wallace High School; Methodist College; St. Louise's School.

General Information

Directors

Aideen O'Neill
Alice Bradley
Claire Woolsey
Erin Tunney
Pamela Montgomery
Traci Kimber
Patricia Mathison
Philomena Duvant
Chrisanne English
Gail Ferguson

Date of Incorporation

11 August 1987

Charity Number

XT3255

Auditors

Jackson Andrews

Bankers

Ulster Bank

Solicitors

Flynn & McGettrick

Secretary

Sonya Carter

Registered Office

30 Adelaide Park,
Belfast. BT9 6FY

Company Registration Number

NI 020807

☎ 02890 666049

✉ admin@belfastwomensaid.org.uk

💻 www.belfastwomensaid.org.uk

📘 Belfast & Lisburn Women's Aid

🐦 @WomensaidBel_Lis

Donate to Belfast & Lisburn Women's Aid
www.belfastwomensaid.org.uk/support-us/donate-now



"Women's Aid has helped me to feel more 'normal'. It has made me more aware of abuse and has helped me to understand my thoughts, feelings and behaviours from when I was in the relationship to how I feel now I am out of it. It has given me strength and courage and techniques to cope and survive through every day. I could not cope without it!"

Women's aid

Belfast and Lisburn

Working to End Domestic Violence

IMPACT REPORT
2016-2017

TRANSFORMING Lives

Leadership Statement

We live in a society where domestic violence remains a serious problem. It has wide-ranging effects on physical and emotional health, well-being and family life. Domestic violence is a repeat crime that increases in severity over time. This places women and children at increased risk of harm, injury and death. Even with awareness raising, it remains shrouded in secrecy, fear and shame. Research suggests that on average women are assaulted 35 times before seeking help, reflecting its complex and hidden nature. In the United Kingdom, it is estimated that two women die every week because of domestic violence. Tragically, three women died in Northern Ireland during the last year. Belfast and Lisburn Women's Aid seeks to challenge attitudes and beliefs that perpetuate domestic violence; we seek to offer safety and support leading to empowerment and to a life free from domestic violence.

We provide a range of life saving services, crisis accommodation and support services. The number of women and children we support evidences the continued need for our services. For the period April 2016-March 2017, 303 women and 225 children were housed across our refuge service; 949 women and 2048 children were supported through our outreach service and through services provided to mothers. We are proud to be able to provide high quality life changing intervention and support services, 205 women completed our 'Journey to Freedom' programme and 203 attended our 'New Beginnings' programme. Through our children's services 328 children participated in group work, 1524 one to one support sessions were held for children.

Partnership working between statutory and voluntary agencies is key to us tackling domestic violence. Our staff continue to play an active role in a number of key partnerships including the Domestic and Sexual Violence and Abuse Partnerships in both Belfast and South Eastern Health and Social Care Trusts. Our Team share their expertise and knowledge through attendance at meetings, developing strategic and operational action plans, training and awareness events, seminars and conferences. This collaborative partnership working continues into the field of safeguarding through the Belfast and South Eastern Outcomes Groups that feed into the Safeguarding Board NI. Staff participate in the MARAC process and provide support to women assessed as high risk. We continue our work with the PSNI in Lisburn and the Public Protection Unit in Belfast. We have two workers placed with the PSNI to offer an immediate response and pathway into our service. This successful initiative supported 186 women into our service last year.

We would like to thank our Team, our staff and volunteers for providing high quality services. We are privileged to have such talent within this organisation; the team demonstrate passion for the job and desire to

make a difference to the lives of the women and children who access the service. Working on the front line of Women's Aid is not easy; however, the difference you make is truly humbling. Our support staff play a valuable role in supporting our frontline team to give the women the help they need. We are accountable for public money and with this comes many obligations and legal requirements. We want to thank the Trustee Board and the Senior Management Team who ensure high standards of governance, risk and financial oversight are in place and operational.

We would like to thank our funders for their continued support from the 'Supporting People Programme' (NIHE), the 'Belfast Health and Social Care Trust', the 'South Eastern Health and Social Care Trust', the Lisburn and Belfast PCSPs, the Department of Justice, the Department of Education Early Years, the Big Lottery, the PSNI and all those who kindly donate to us.

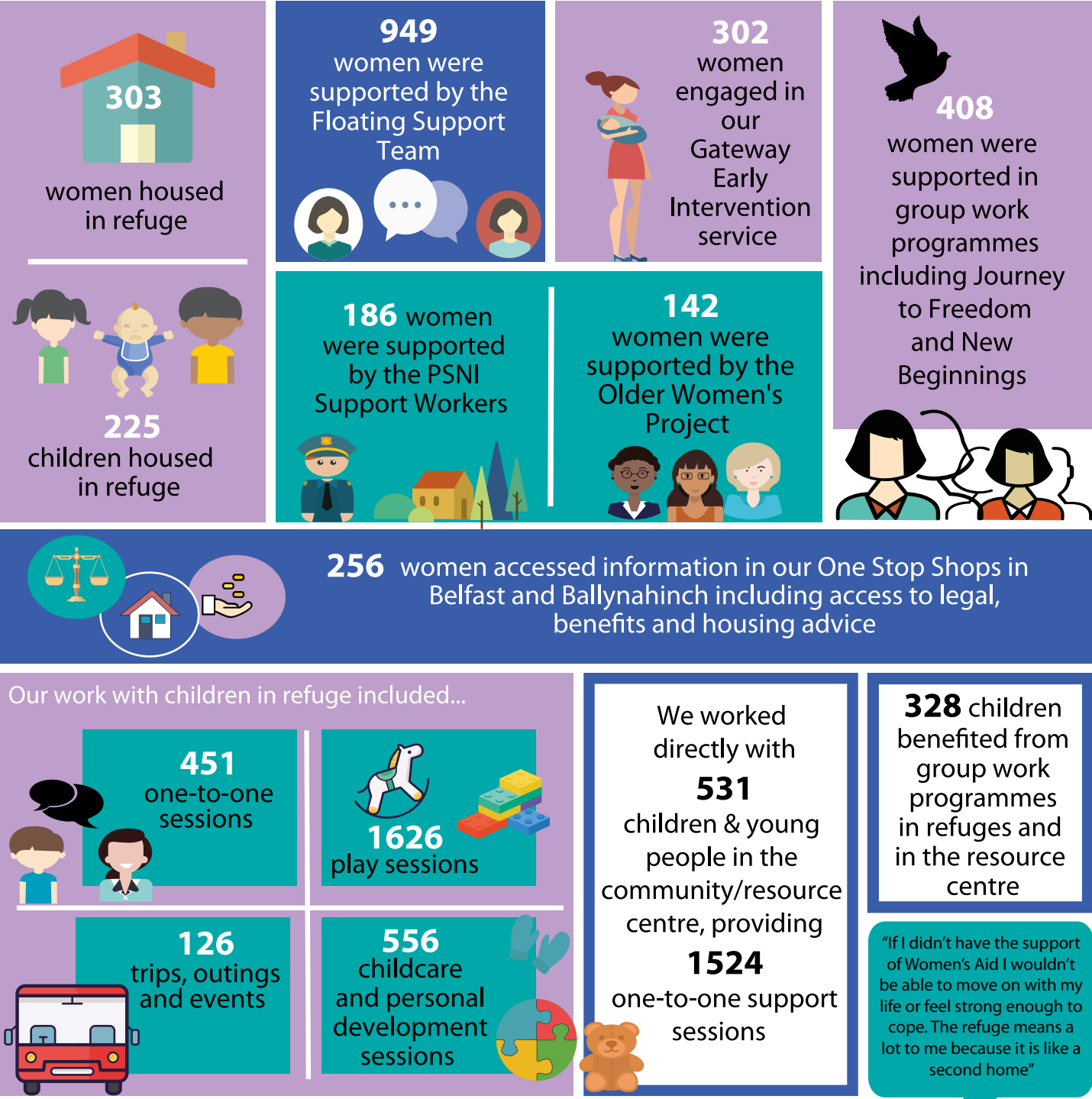
Looking forward to the year ahead, it is worth noting the United Nations ICESCR Committee highlighted in its 2016 Concluding Observations on the UK that the significant rise in homelessness in Northern Ireland affected victims of domestic violence amongst other vulnerable groups. The UN ICESCR Committee urged the UK to take immediate measures, including allocating appropriate funds to local authorities... to ensure adequate provision of reception facilities, including emergency shelters, hostels and reception, as well as social rehabilitation centres'.

In early 2016, the Department of Justice consulted on whether there should be a specific offence that captured patterns of coercive and controlling behaviour. Following this consultation the Department of Justice began preparing a Domestic Abuse Bill, which it continues to develop. This Bill aims to provide for a new domestic abuse offence capturing patterns of psychological abuse, violence, and/or coercion of a partner, ex-partner or close family member. It also includes a statutory aggravation of domestic abuse, which may attract enhanced sentencing for other offences. The enactment of this Bill is subject to the legislative process, which is stalled due to the suspension of the NI Assembly. In the absence of a functioning Executive, Belfast and Lisburn Women's Aid will continue to work with our sister Women's Aid groups to lobby for a Domestic Abuse Bill for Northern Ireland.

While challenges ahead remain to sustain services, we are enthusiastic to progress greater collaboration within Women's Aid regionally to future proof our service, to strengthen and secure our position as the experts in relation to all aspects of domestic violence.

Aideen O'Neill
Chair

Kelly Andrews
Chief Executive



Statement of Accounts

Income From:	£	%
Supporting People - Refuge	863,063	37%
Supporting People - Floating Support	534,762	23%
Health & Social Care Trusts	205,043	9%
Grants	411,027	18%
Housing Management	195,210	8%
Donations	67,440	3%
Investment Income	31,211	1%
Utilities Income	15,547	< 1%
Training	12,785	< 1%
	2,336,088	100%

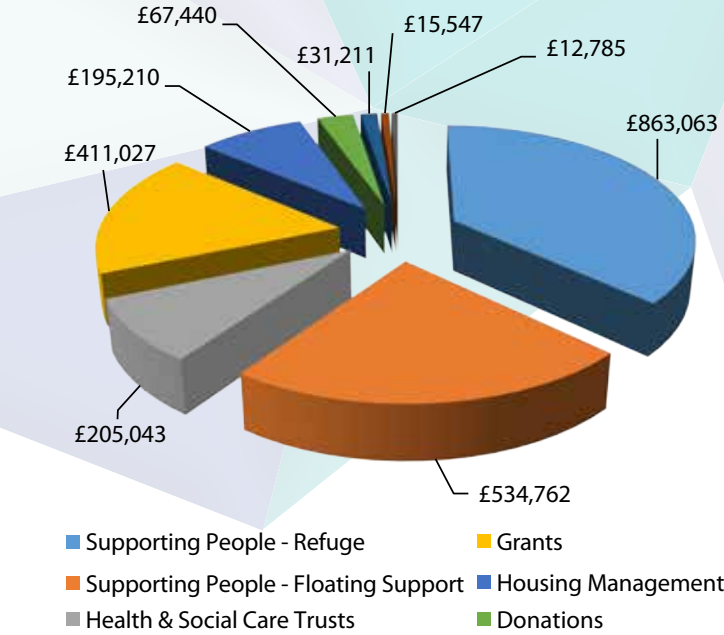
Resources Expended	£	%
Supported Housing	1,171,211	52%
Outreach Support	1,018,986	45%
Other	60,135	3%
Voluntary Income/Raising Funds	4,467	0%
	2,254,799	100%

Summary Balance Sheet

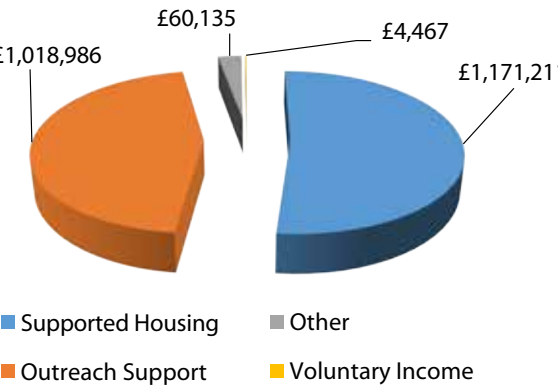
At 31 March 2017 Women's Aid held the following assets:	£
Fixed Assets	3,760,365
Net Current Asset after pension liability	1,159,770
	4,920,135

And the following funds:	£
Unrestricted	1,288,363
Designated	1,920,098
Restricted	1,711,674
	4,920,135

Incoming Resources 2016/17



Resources Expended 2016/17



Copies of accounts can be obtained from 30 Adelaide Park, Belfast, BT9 6FY or www.belfastwomensaid.org.uk